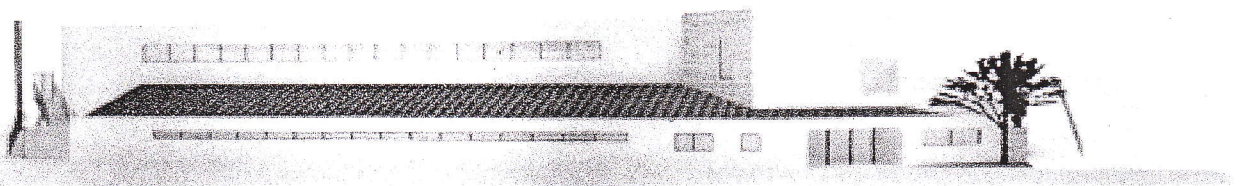
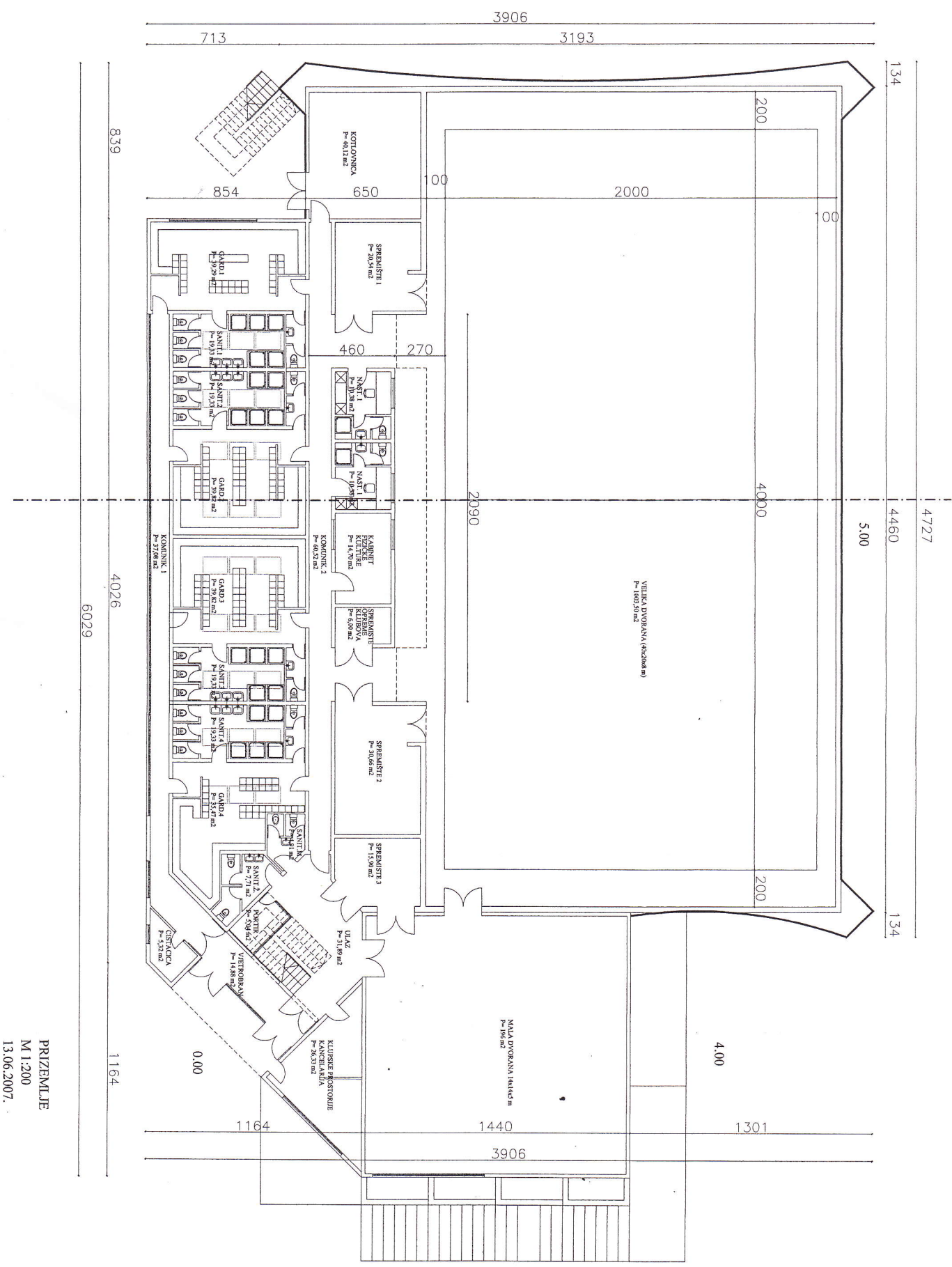


IDEJNO RJEŠENJE SPORTSKE DVORANE  
PRIMORSKI DOLAG



IZRADIO: PB KONSTRUKTOR d.o.o. Split  
Projektant: Nives Anicic d.i.a.  
13. lipanj 2007.god.





PRIZEMLJE  
 M 1:200  
 13.06.2007.